

CMS Hong Kong

BEGIN

CMS Hong Kong. Join us

As the Managing Partner, I am delighted to introduce you to CMS in Hong Kong and the APAC region. We are very much in “growth mode” in Hong Kong and have expanded significantly in recent years, with plans to grow further. Currently, we serve clients across all practice areas of Banking & Finance, Commercial, Corporate / M&A, Dispute Resolution, Energy, Projects & Construction, Intellectual Property, International Arbitration, Maritime & Insurance within eight industry sectors including Consumer Products, Energy & Climate Change, Financial Services, Infrastructure & Project Finance, Insurance, Life Sciences & Healthcare, Shipping, and Technology, Media, Intellectual Property and Communications (TMIC).

Our unique offering in Hong Kong enables us to provide both local and international legal advice, from both common law and civil law perspectives, across the Asia-Pacific region and beyond. Many of our partners and teams are leaders in their fields, presenting you with the opportunity to work with first class, commercially-minded lawyers, and to support global players in the industry on their most strategic and complex transactions and cases.



Steven Wise
Managing Partner
Hong Kong Office

From day one, you will be given the tools, resources and technology that you would expect at a future facing firm. We have invested heavily in technology to provide you with an agile working environment to help achieve a sustainable balance between work and home. We are also committed to your professional and personal development and provide extensive training courses, available in multiple formats, to help you thrive and progress along your chosen career path.

We have a strong DEIB ethos, which is seen throughout CMS. Furthermore, we are passionate about giving back to the local community and actively encourage you to participate in local community initiatives – in fact, it is our trainees and junior fee-earners who brainstorm, execute and coordinate our CSR initiatives. For example, we participate in the Hong Kong Legal Walk and have organised team events at both the Crossroads Foundation and Food Angel organisations over the years. When it comes to sustainability initiatives, we work with a local bee farm where we have a sponsored bee hive. This has certainly created a buzz in the office!



CMS in Asia



Offices in the region including Beijing, Brisbane, Hong Kong, Shanghai, Singapore, Sydney and seven offices in India



Number of partners



Number of lawyers



More than 10 nationalities speaking over 10 languages fluently



Full service across the region



Local and international law capability via local collaborations



Sector focused – consumer products, energy & climate change, financial services, infrastructure & project finance, insurance, life sciences & healthcare, shipping and technology, media, intellectual property and communications (TMIC)



Civil law and common law advice



Ranked in Asian Legal Business' (ALB) 'Top 50 Largest Law Firms in Asia' and 'Top 30 Largest Firms in China'



Award Winning – FT Innovative Law Awards, ALB Employer of Choice, SE Asia Law Awards



Advising international business operating and investing in Asia



Advising Asian businesses on local and international issues



Our locations

The Americas

Bogotá
Lima
Mexico City
Rio de Janeiro
Santiago de Chile
São Paulo
Silicon Valley*

Europe

Aberdeen	Cologne	Leipzig	Oslo	Stockholm
Amsterdam	Dublin	Lisbon	Paris	Strasbourg
Antwerp	Duesseldorf	Liverpool	Podgorica	Stuttgart
Barcelona	Edinburgh	Ljubljana	Poznan	Tirana
Belgrade	Frankfurt	London	Prague	Vienna
Bergen	Funchal	Luxembourg	Reading	Warsaw
Berlin	Geneva	Lyon	Rome	Zagreb
Bratislava	Glasgow	Madrid	Sarajevo	Zurich
Bristol	Gothenburg	Manchester	Sheffield	
Brussels	Hamburg	Milan	Skopje	
Bucharest	Istanbul	Monaco	Sofia	
Budapest	Kyiv	Munich	Stavanger	

Casablanca
Ebene
Johannesburg
Luanda
Maputo
Mombasa
Nairobi

Africa

Abu Dhabi
Dubai
Muscat
Riyadh
Tel Aviv

Middle East

Beijing
Bengaluru
Brisbane
Chennai
Gurugram
Hong Kong
Hyderabad
Mumbai
New Delhi
Shanghai
Singapore
Sydney

Asia-Pacific

* Representative Office



Charles Currier
The Senior Partner

Message from **Charles Currier** Senior Partner, CMS UK

We have faced some transforming challenges to our world in recent times – for our personal lives and for both the business and political world. We are shocked and saddened by the humanitarian crisis at the heart of the conflict in Ukraine as well as inspired by the bravery and resilience shown by people.

Most of us have a new perspective on what matters and what is important. We have entered a new world, and this new world is different. Parts of the old world may return but many parts will not and of course, perspectives will be forever changed.

We need to be agile, we need to adapt and respond, ready for a very changed world. There are many perspectives, the issues of Climate Change, sustainability and a greener world will affect everything we do.

We are a Future Facing law firm, Bold, Dynamic, Agile and committed to Excellence. An important part of our strategy is to inspire, impact and support our clients, our people and our communities. We are supporting Ukraine and neighbouring countries through pro bono work and joining the international community in fundraising efforts to help alleviate the suffering caused by this conflict.

We bring together all our community work through our Social Impact programme. Our ambition is for the firm to be a **leader in social purpose**. The aim of our Social Impact programme is to ensure that collectively and individually, we are able to make a positive difference in the communities we live and work in, both **locally and globally**. Underpinning our Social Impact programme is the firm's commitment to responsible business and the UN Global Goals and we will focus on the areas where we can have the most impact: Peace, Justice, Strong Institutions and the Rule of Law (Goal 16), Climate Action (Goal 13), Reducing Inequalities (Goal 10) and Quality Education (Goal 4).





The exposure to different markets and working styles broadened my perspective and helped me build lasting professional relationships.



Kelly Chiang
Associate
Finance /
Corporate Funds
CMS Hong Kong

Stories from our people: **Kelly Chiang**

"I first joined CMS through the Hong Kong office's summer vacation scheme in 2021, which gave me a real insight into the firm's culture and the calibre of work on offer. Inspired by that experience, I began my two-year training contract in 2023 and have since qualified with both the Asset Finance team and Investment Funds team.

From the outset, I was impressed by the breadth of training resources available across every practice group in the firm. Whether it was technical know-how or practical skills, there was always support at hand, and the learning curve was both steep and rewarding.

One of the aspects I most appreciate about CMS is the secondment opportunity offered to every trainee in the Hong Kong office. I was fortunate to spend six months with the London office's Banking team, which was an invaluable experience. Not only did I receive great training, but I also had the chance to network with colleagues from across the wider firm. The exposure to different markets and working styles broadened my perspective and helped me build lasting professional relationships.

CMS's commitment to innovation is another a standout feature. The firm has invested heavily in technology, embracing AI tools like Harvey and Microsoft Copilot to ensure we are truly future-facing lawyers. As a junior, I have found that these technologies significantly improve our efficiency and allow us to focus on more meaningful aspects of our work.

Beyond the office, I have enjoyed taking part in the firm's CSR initiatives such as the bee farm visit to help save local bees, volunteering with Food Angel, and organising the Hong Kong Legal Walk. These experiences have not only been rewarding on a personal level but have also helped foster a sense of community within the firm."





Kathy Wong
Senior Associate
Finance
CMS Hong Kong



The close-knit and supportive environment here is what sets CMS apart and makes it a fantastic place to build your career.

Stories from our people: **Kathy Wong**

Since joining CMS Hong Kong as a senior associate in April 2023, I have been genuinely impressed by the firm's welcoming and supportive culture. Right from the start, I found my colleagues to be approachable and friendly, which made the transition much smoother. The regular social events have also helped me settle in quickly and feel truly part of the firm.

CMS truly lives up to its promise of being a global law firm. Within my first two years, I had the privilege of participating in the CMS Asia Academy in Hong Kong, attending specialist banking training in the Warsaw office, and joining the banking conference in the London office. These experiences have been incredible opportunities to connect with colleagues from around the world, in addition to our daily cross-jurisdictional work.

What stands out to me the most is CMS's strong emphasis on personal development and its deep commitment to diversity, equity, inclusion, and belonging. The close-knit and supportive environment here is what sets CMS apart and makes it a fantastic place to build your career.





The firm is not just about work. It also places huge emphasis on our professional development.



Jessica Cheung
Associate
Dispute Resolution
CMS Hong Kong

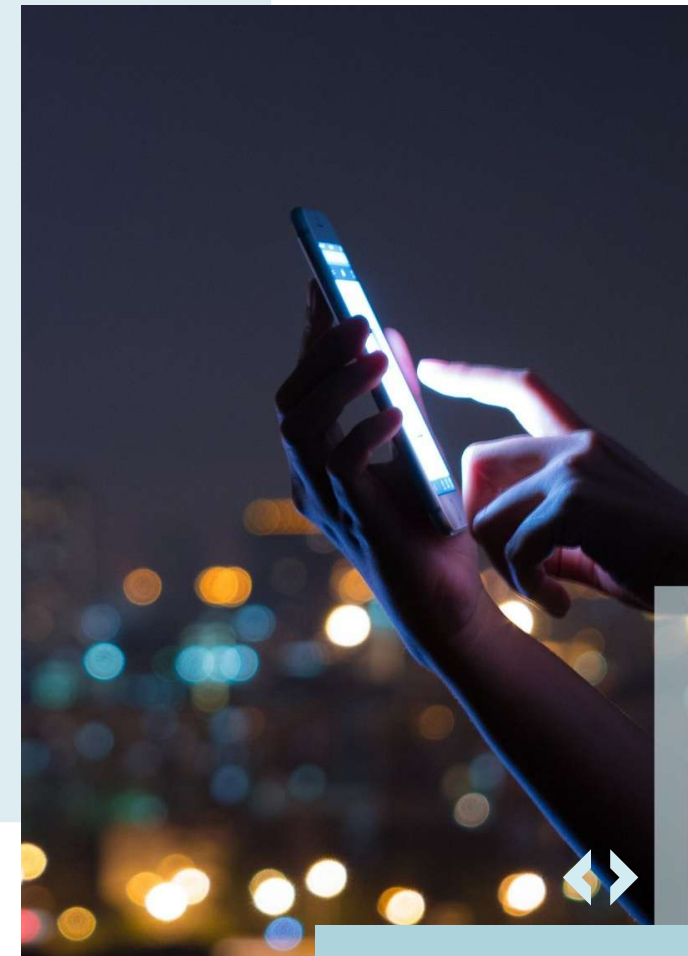
Stories from our people: **Jessica Cheung**

"I joined CMS as a paralegal in 2019. In the same year, I started my 2-year training contract with the firm and qualified with the dispute resolution team in 2022.

From the very beginning of my training, I had the opportunity to assist with sizable claims and deals under the supervision of qualified practitioners. The hands-on approach allowed me to develop a solid understanding of the practical aspects of the profession while learning from experienced colleagues.

Having qualified as a solicitor now, the learning curve remains steep, and I continue to learn from my work and colleagues every day. The supportive culture at CMS has made it a wonderful place to work, as everyone – from support staff to my peers to the partners is approachable and consistently offers constructive feedback on my work.

The firm is not just about work. It also places huge emphasis on our professional development. For instance, the London office regularly organises training workshops and we, the disputes team in Hong Kong, are taking turns to organise internal CPD talks every month so that we are keeping abreast of the latest legal development in our practice area. Outside the workplace, we are encouraged to meet with clients to connect with them. Last year, our team organised a joyous mani and bubbly evening for our clients, which was not only fun but also an experience that strengthens our relationship within the team and with the clients!"





The training and professional support has been instrumental to my development and allowed me to explore both my interests and strengths.



Eugene Wong
Associate
Commercial / IP
CMS Hong Kong

Stories from our people: Eugene Wong

"I joined CMS in 2019 after attending the Hong Kong office's first summer internship program and heartily recommend the program as it provides valuable insight into the type of clients and cases which the firm regularly advises on.

During my time at the firm, I have been fortunate to work on a variety of matters for international clients of all shapes and sizes – from listed companies to start ups. The training and professional support has been instrumental to my development and allowed me to explore both my interests and strengths. In terms of culture, my diverse and dynamic colleagues have fostered an open-door policy where I feel welcome to share my views.

In respect of CSR, the firm has been actively engaged in various initiatives both locally and internationally including contributions to the Médecins Sans Frontières cookbook, volunteering at the Crossroads Foundation and preparing food at Food Angel. In this regard, I have been pleasantly surprised by the firm's willingness to explore and support new initiatives."





“Rice Robotics exemplifies the innovation and ambition driving Asia’s startup ecosystem. We are proud to be part of their journey and to continue supporting visionary founders like Victor and his team through equiP.”

Jonathan Chu, Partner of Hong Kong office and Head of Beijing office.



Case study: **equiP Successful Stories in Hong Kong**

Rice Robotics

Rice Robotics is a trailblazer in workforce automation, developing autonomous delivery and disinfection robots that seamlessly navigate complex environments, operate elevators, and self-charge without human assistance. With deployments across malls, offices, hotels, and commercial properties in Hong Kong, Japan, and Thailand, Rice is redefining operational efficiency in the service sector.



A recent graduate of our equiP programme, and the first Greater China member of the programme, Rice has achieved remarkable milestones, including winning Alibaba Jumpstarter 2021 and being named to the Forbes Asia 100 to Watch list. We are proud to be supporting Rice throughout its growth journey including advising on IP issues, investment agreements, employment matters, disputes, and M&A activity. Most recently, we’ve assisted in the launch of its Web3 spinout, a standalone entity focused on tokenisation, AI, and robotics, with cross-border support from CMS offices.

<https://www.ricerobotics.com/>





Case study: **MV “MILANO BRIDGE”**

MV “MILANO BRIDGE” is a container ship with gross tonnage in excess of 150,000 MT. On 6 April 2020, MV “MILANO BRIDGE” allided with the port operated by Pusan Newport Co., Ltd in Busan, South Korea, causing immediate damage to the port as well as the collapse of cranes at the port. There are a number of videos of the allision on the internet which shows the collapse of the cranes. The claim of Pusan Newport was estimated to be in excess of USD 100m for property damaged and business interruption due to the allision. We represented Pusan Newport.

Whilst a vessel can limit her liability pursuant to the Tonnage Convention, the limitation available to a vessel differs in each jurisdiction depending on the version of the Tonnage Convention applicable in the particular jurisdiction.

It is therefore very important for a claimant as to which court seize jurisdiction of the matter. There is a fine balance between forum shopping and serving justice given a claimant's claim can be heavily limited simply because a particular jurisdiction has not rectified the latest version of the Tonnage Convention.

The work involved the arrest of a sistership of MV “MILANO BRIDGE” in Hong Kong, the negotiation of security, the collaboration with lawyers in Australia, Japan and South Korea and working with technical experts and forensic accountants on the allision as well as the claim amount. This showcases the type of work that the team regularly deals with, which often is cross- discipline and cross-border.





The deal was named as one of the
“Deals of the Year 2022” by China
Business Law Journal.

Case study: **Tsingshan Nickel Crisis**

Tsingshan Group (the world's largest nickel metal producer) suffered heavy losses in its nickel trading, following a short squeeze in early March 2022. The media reported that “Tsingshan could have suffered well over USD 2bn of daily losses at the most extreme point of nickel's surge”.

The crisis arose as a result of the Western sanctions against Russia. The price of nickel suddenly rose 500% in a single day, to above USD 100,000 per tonne on 8 March 2022. This prompted the London Metal Exchange (LME) to stop trading and cancel contracts to prevent a systemic meltdown. The media described this nickel crisis as ‘unprecedented’, ‘never happened before in the history of the nickel market’, ‘the mother of all short squeezes’.

We advised Bank of China on the successful workout of the Tsingshan-LME nickel derivatives crisis with the dire special situation successfully being restructured within 6 months and resulting in the Bank of China suffering no losses.



CMS Hong Kong

[APPLY NOW](#) >



CMS Careers

E recruitment.hk@cms-hk.com



CMS Law-Now™

Your free online legal information service.

A subscription service for legal articles on a variety of topics delivered by email.
cms-lawnow.com

The information held in this publication is for general purposes and guidance only and does not purport to constitute legal or professional advice.

CMS is an international organisation of independent law firms ("CMS Member Firms"). CMS LTF Limited (CMS LTF) is a company limited by guarantee incorporated in England & Wales (no. 15367752) whose registered office is at Cannon Place, 78 Cannon Street, London EC4N 6AF United Kingdom. CMS LTF coordinates the CMS Member Firms. CMS LTF provides no client services. Such services are solely provided by CMS LTF's CMS Member Firms in their respective jurisdictions. CMS LTF and each of its CMS Member Firms are separate and legally distinct entities, and no such entity has any authority to bind any other. CMS LTF and each CMS Member Firm are liable only for their own acts or omissions and not those of each other. The brand name "CMS" and the term "firm" are used to refer to some or all of the CMS Member Firms or their offices; details can be found under "legal information" in the footer of cms.law.

CMS locations:

Aberdeen, Abu Dhabi, Amsterdam, Antwerp, Barcelona, Beijing, Belgrade, Bengaluru, Bergen, Berlin, Bogotá, Bratislava, Brisbane, Bristol, Brussels, Bucharest, Budapest, Casablanca, Chennai, Cologne, Dubai, Dublin, Duesseldorf, Ebene, Edinburgh, Frankfurt, Funchal, Geneva, Glasgow, Gothenburg, Gurugram, Hamburg, Hong Kong, Hyderabad, Istanbul, Johannesburg, Kyiv, Leipzig, Lima, Lisbon, Liverpool, Ljubljana, London, Luanda, Luxembourg, Lyon, Madrid, Manchester, Maputo, Mexico City, Milan, Mombasa, Monaco, Mumbai, Munich, Muscat, Nairobi, New Delhi, Oslo, Paris, Podgorica, Poznan, Prague, Reading, Rio de Janeiro, Riyadh, Rome, Santiago de Chile, São Paulo, Sarajevo, Shanghai, Sheffield, Silicon Valley, Singapore, Skopje, Sofia, Stavanger, Stockholm, Strasbourg, Stuttgart, Sydney, Tel Aviv, Tirana, Vienna, Warsaw, Zagreb and Zurich.

Further information can be found at cms.law

